

**AIP**

**AERONAUTICAL INFORMATION PUBLICATION**

**REPÚBLICA DEMOCRÁTICA DE TIMOR-LESTE**

**PART 3**

**AERODROMES (AD)**

**PART 3 – AERODROMES (AD)**

**AD 0.**

- AD 0.1 PREFACE – Not applicable**
- AD 0.2 REDORD OF AIP AMENGMENTS – Not applicable**
- AD 0.3 RECORD OF AIP SUPPLEMENTS – Not applicable**
- AD 0.4 CHECKLIST OF AIP PAGES – Not applicable**
- AD 0.5 LIST OF HAND AMENDMENTS TO THE AIP – Not applicable**

**AD 0.6 TABLE OF CONTENTS TO PART 3**

	<i>Page</i>
<b>AD 1 AERODROMES/HELIPORTS - INTRODUCTION</b>	AD 1.1-1
AD 1.1 Aerodrome/heliport availability .....	AD 1.1-1
AD 1.1.1 General conditions under which aerodromes/heliports .....	AD 1.1-1
and associated facilities are available for use	
AD 1.1.2 Application of ICAO documents .....	AD 1.1-2
AD 1.1.3 Operations outside of published hours (Night Operations) .....	AD 1.1-2
AD 1.1.4 Parking Space .....	AD 1.1-3
AD 1.1.5 Closure of Aerodromes .....	AD 1.1-3
AD 1.2 Rescue and Fire fighting services .....	AD 1.2-1
AD 1.3 Index to aerodromes .....	AD 1.3-1
AD 1.4 Grouping of aerodromes .....	AD 1.4-1
AD 1.4.1 Primary/major international aerodrome .....	AD 1.4-1
AD 1.4.2 Secondary/other international aerodrome .....	AD 1.4-1
AD 1.4.3 National aerodrome .....	AD 1.4-1
AD 1.5 Aerodrome handling service providers .....	AD 1.5-1
<b>AD 2 AERODROMES</b>	
WPDL AD 2.1 Aerodrome location indicator and name .....	AD 2-1
WPDL AD 2.2 Aerodrome geographical and administrative data .....	AD 2-1
WPDL AD 2.3 Operational hours .....	AD 2-1
WPDL AD 2.4 Handling services and facilities .....	AD 2-2
WPDL AD 2.5 Passenger facilities .....	AD 2-2
WPDL AD 2.6 Rescue and fire fighting services .....	AD 2-2
WPDL AD 2.7 Seasonal availability .....	AD 2-2
WPDL AD 2.8 Aprons, taxiways and check locations/position data .....	AD 2-3
WPDL AD 2.9 Surface movement guidance, control systems and markings .....	AD 2-3
WPDL AD 2.10 Aerodrome obstacles .....	AD 2-3
WPDL AD 2.11 Meteorological information provided .....	AD 2-3
WPDL AD 2.12 Runway physical characteristics .....	AD 2-4
WPDL AD 2.13 Declared distances .....	AD 2-4
WPDL AD 2.14 Approach and runway lighting .....	AD 2-4
WPDL AD 2.15 Other lighting and secondary power supply .....	AD 2-5
WPDL AD 2.16 Helicopter areas .....	AD 2-5
WPDL AD 2.17 ATS airspace .....	AD 2-5

WPDL	AD 2.18	ATS communication facilities .....	AD 2-5
WPDL	AD 2.19	Radio navigation and landing aids .....	AD 2-6
WPDL	AD 2.20	Local traffic regulations .....	AD 2-6
WPDL	AD 2.21	Noise abatement procedures .....	AD 2-6
WPDL	AD 2.22	Flight procedures .....	AD 2-6
WPDL	AD 2.23	Additional information .....	AD 2-6
WPDL	AD 2.24	Related charts .....	AD 2-7
WPEC	AD 2.1	Aerodrome location indicator and name .....	AD 3-1
WPEC	AD 2.2	Aerodrome geographical and administrative data .....	AD 3-1
WPEC	AD 2.3	Operational hours .....	AD 3-1
WPEC	AD 2.4	Handling services and facilities .....	AD 3-1
WPEC	AD 2.5	Passenger facilities .....	AD 3-2
WPEC	AD 2.6	Rescue and fire fighting services .....	AD 3-2
WPEC	AD 2.7	Seasonal availability .....	AD 3-2
WPEC	AD 2.8	Aprons, taxiways and check locations/position data .....	AD 3-2
WPEC	AD 2.9	Surface movement guidance, control systems and markings ....	AD 3-2
WPEC	AD 2.10	Aerodrome obstacles .....	AD 3-2
WPEC	AD 2.11	Meteorological information provided .....	AD 3-3
WPEC	AD 2.12	Runway physical characteristics .....	AD 3-3
WPEC	AD 2.13	Declared distances .....	AD 3-3
WPEC	AD 2.14	Approach and runway lighting .....	AD 3-3
WPEC	AD 2.15	Other lighting and secondary power supply .....	AD 3-3
WPEC	AD 2.16	Helicopter areas .....	AD 3-4
WPEC	AD 2.17	ATS airspace .....	AD 3-4
WPEC	AD 2.18	ATS communication facilities .....	AD 3-4
WPEC	AD 2.19	Radio navigation and landing aids .....	AD 3-4
WPEC	AD 2.20	Local traffic regulations .....	AD 3-4
WPEC	AD 2.21	Noise abatement procedures .....	AD 3-4
WPEC	AD 2.22	Flight procedures .....	AD 3-5
WPEC	AD 2.23	Additional information .....	AD 3-5
WPEC	AD 2.24	Related charts .....	AD 3-5
WPDB	AD 2.1	Aerodrome location indicator and name .....	AD 4-1
WPDB	AD 2.2	Aerodrome geographical and administrative data .....	AD 4-1
WPDB	AD 2.3	Operational hours .....	AD 4-1
WPDB	AD 2.8	Aprons, taxiways and check locations/position data .....	AD 4-1
WPDB	AD 2.9	Surface movement guidance, control systems and markings ....	AD 4-1
WPDB	AD 2.10	Aerodrome obstacles .....	AD 4-1
WPDB	AD 2.12	Runway physical characteristics .....	AD 4-2
WPDB	AD 2.13	Declared distances .....	AD 4-2
WPDB	AD 2.17	ATS airspace .....	AD 4-2
WPDB	AD 2.22	Flight procedures .....	AD 4-2
WPDB	AD 2.23	Additional information .....	AD 4-2
WPDB	AD 2.24	Related charts .....	AD 4-2

## AD 1 – AERODROMES– INTRODUCTION

### AD1.1 AERODROME AVAILABILITY

#### 1. General conditions under which aerodromes/heliports and associated facilities are available for use

##### 1. General

1.1 The Timor Leste government owns all aerodromes including in the Oecussi enclave. Aerodromes operating hours are restricted to daylight hours as published.

1.2 The CAD operates Aeroporto Internacional Presidente Nicolau Lobato (Dili International aerodrome).

1.3 Aeroporto Internacional Presidente Nicolau Lobato aerodromes are designated as international aerodromes. However, Aeroporto Internacional Presidente Nicolau Lobato presently is the only aerodrome authorized by CAD for regular commercial operations on a charter basis.

1.4 Operators intending to operate international flights to Baucau aerodrome, must obtain prior approval from the CAD, which will consider requests on a case-by-case basis. Operators must conduct operations in accordance with the approved slot time and, are responsible to make their own arrangements with and obtain prior approval of the relevant Timor Leste border control agencies.

1.5 A number of airstrips and helicopter landing sites exist throughout Timor Leste but these have not been assessed as suitable for civil aircraft operations.

1.6 Due to lack of taxiways at the aerodromes pilots after landing are required to backtrack and taxi on the runway to proceed to aprons and, likewise to position for takeoff.

1.7 No visual signals are available at the aerodromes.

1.8 No friction measuring devices are available for measuring runway surface friction.

1.9 Timor Leste has high and rugged terrain. High terrain and obstructions exist close to the aerodromes. Most obstructions are unmarked or unlit. Pilots must exercise caution especially when conducting circling approaches or operating in low visibility conditions. Details of known obstructions are provided under AD 2.10 respectively for the listed aerodromes under Section AD 2.

1.10 Aerodrome operating minima are not established. Operators shall establish aerodrome operating minima for each of the aerodromes to which they operate into in accordance with the provisions of Annex 6, Part 1.

##### 2. Landings made at other than Dili aerodrome.

2.1 If a landing is made other than Dili aerodrome or a designated alternate aerodrome, the pilot-in-command shall report the landing as soon as practicable to the immigration, customs and health authorities. This notification may be through any available communication facility.

2.2 The pilot-in-command shall ensure that:

- a) if pratique has not been granted to the aircraft at the previous landing, contact between passengers/crew and other persons is avoided;
- b) cargo, baggage and mail are not removed from the aircraft.

##### 3. Traffic of persons and vehicles on aerodromes.

###### 3.1 Demarcation of Zones

3.1.1 The grounds at aerodromes are divided into two zones as follows:

- a) public zone comprising that part of the aerodrome opened to public; and
- b) restricted zone comprising the rest of the aerodrome.

### 3.2 *Movement of Persons*

3.2.1 Access to the restricted zone is authorized in accordance with aviation regulations and rules/conditions laid down by the aerodrome authority.

### 3.3 *Movement of Vehicles*

3.3.1 Movement of vehicles in the restricted zone is strictly confined to vehicles driven or used by persons issued with a special permit. Persons so authorized must respect traffic direction, traffic signs and speed limits.

## 4. *Security and Policing*

4.1 Security, care and protection of aircraft, vehicles, equipment and goods at aerodromes are not the responsibility of the State or of the aerodrome operator and they cannot be held responsible for any loss or damage.

## 2. Application of ICAO documents

2.1 The provisions of Annex 14 are complied with to the extent possible.

## 3. Operations outside of published hours (Night Operations)

### 3.1 *General*

3.1.1 Night operations generally are not permitted at the aerodromes. However, the CAD may permit night operations for emergency purposes only, such as for urgent medical evacuation or mercy flights, and training flights at Aeroporto Internacional Presidente Nicolau Lobato.

3.1.2 Night operations where permitted are undertaken at the sole discretion of the operator and the CAD shall not be held

liable for any incident or accident arising from such operations.

### 3.2 *Emergency/Mercy Flights*

3.2.1 Operators intending to conduct emergency night operations should give as much prior notification as possible to CAD of their intentions including stating any requirement for air traffic control and aerodrome services and, obtain approval.

3.2.2 When circumstances do not permit prior notification to CAD, operators shall notify Dili aerodrome authority the following day of any emergency flight operations including positioning flights conducted the previous night.

3.2.3 Operators/pilots shall comply with the following requirements as appropriate with respect to airways clearance for departing international flights when arrangements have not been made for local air traffic services:

- a) Contact Brisbane Radio on HF before departure providing flight details and obtain airways clearance; or
- b) Contact Bali ATSU on telephone number +62 361 755140 for airways clearance to enter Bali or Ujung Pandang FIR before departure.

3.2.4 Pilot-activated AGL system is described in WPDL AD2.14 under AD2 – Aerodromes.

3.2.5 Operators/pilots shall comply as appropriate with the regulations of the State of the Operator when conducting emergency night operations at Dili aerodrome. The pilot-in-command should preferably have previous experience in daytime operations into Dili aerodrome and be familiar with the routes and terrain conditions. Additionally, the following must be complied with:

- a) flights shall be flown under IFR;
- b) ICAO requirements for lowest safe altitudes;
- c) adequate fuel for diversion purposes;
- d) runway inspection prior to take-off and landing; and

- e) arrangements with the border control agencies for approval.

3.2.6 Operators and/or pilots-in-command are responsible to assess and ensure that each emergency night operation can be conducted in a safe manner. See ENR 10.1.1.

### 3.3 *Night Training*

3.3.1 CAD may approve night training flights in the Dili CTR/aerodrome to enable flight crew to maintain their proficiency. Operators wishing to conduct night training shall make a request to CAD and comply with all conditions stated in the approval.

## **4. Parking Space**

4.1 Aircraft parking space at aerodromes is limited. Overnight parking at Aeroporto Internacional Presidente Nicolau Lobato is subject to specific approval from CAD. Requests for overnight parking shall be included in the request for flight approval.

## **5. Closure of Aerodromes**

5.1 Aerodromes will be closed under the following conditions:

- a) whenever the landing area is unfit or is unsafe; or
- b) at such other times as notified by NOTAM.

5.2 Aerodromes will not be closed because of adverse weather conditions or unavailability of essential services. The pilot-in-command is responsible to decide whether to take-off or land during adverse weather conditions or when advised of unavailability of services.

5.3 Aircraft experiencing an emergency will be permitted to land regardless whether the aerodrome is closed or conditions are unsafe. When ATC is operating the pilot will be advised if conditions are unsafe. Outside of ATC operating hours the pilot will receive no advice

## **AD1.2 RESCUE AND FIRE FIGHTING SERVICES**

1.1 Information on Rescue and Fire Fighting Services is given on the relevant page for each aerodrome under AD 2.

1.2 No facilities are available for removal of disabled aircraft.

**AD1.3 INDEX TO AERODROMES AND HELIPORTS**

<i>Aerodrome/heliport name and Location Indicator</i>	<i>Type of traffic permitted to use aerodrome/heliport</i>			<i>Reference to AD Section and remarks</i>
	<i>International (INTL) National (NTL)</i>	<i>IFR-VFR</i>	<i>S = Scheduled NS = Non-Schedules P = Private</i>	
1	2	3	4	5
<b>Aerodromes</b>				
Baucau/Cakung (WPEC)	INT- NTL	VFR	NS & P	Unattended landing ground
Dili/Presidente Nicolau Lobato (WPDL)	INTL -NTL	IFR - VFR	S, NS & P	AD – 2 WPDL
Suai (WPDB)	NTL	VFR	NS & P	Unattended landing ground



## **AD 1.4 GROUPING OF AERODROMES**

Aerodromes are grouped as follows:

### **1. Primary/major international aerodrome**

1.1 The aerodrome of entry and departure for international air traffic where all formalities concerning customs, health, immigration, animal and plant quarantine and similar procedures are carried out and where air traffic services are available during published hours of operation.

### **2. Secondary/other international aerodrome**

2.1 Another aerodrome available for entry and departure of international air traffic where air traffic services and the formalities concerning customs, health, immigration, animal and plant quarantine and similar procedures are made available on a restricted basis only to flights with prior approval.

### **3. National aerodrome**

3.1 An aerodrome available only for domestic air traffic where civil air traffic are permitted under conditions specified by CAD.

## AD 1.5 AERODROME HANDLING SERVICE PROVIDERS

1.1 Contact details of aircraft fuel and ground handling service providers at Aeroporto Internacional Presidente Nicolau Lobato are listed below for the convenience of operators and pilots.

1.2 Reference herein to services or the use of any firm or corporation name is for the information and convenience of aircraft operators and pilots only and in no manner constitutes an endorsement or recommendation by the CAD.

### **Aviation Fuel/Oil:**

#### **Air BP**

Tel: +670 3322 588  
Mobile: +670 723 3049  
Fax: +670 3321 060  
E-mail: [airbpdili@yahoo.com.au](mailto:airbpdili@yahoo.com.au)

#### **PERTAMINA**

Tel: +670 3321 760  
Mobile: +670 724 0294  
Fax: +670 3323 465  
E-mail: [deckycb@pertamina\\_dili.com](mailto:deckycb@pertamina_dili.com)

### **Ground Handling:**

#### **Timor Aviation Services**

Tel: +670 3311 563  
Mobile: +670 723 1113 (H24)  
Fax: +670 3322 901  
E-mail: [operations@timoraviation.com](mailto:operations@timoraviation.com)

#### **SDV**

Tel: +670 3322 818  
Mobile: +670 723 0516 (H24)  
Fax: +670 3324 077  
E-mail: [sdvdil@sdv.com](mailto:sdvdil@sdv.com)

#### **S.T.A.T**

Tel: +670 390 325 098  
Mobile: +670 390 724 6775  
Fax: +670 3385 106  
E-mail: [stat-jb91@hotmail.com](mailto:stat-jb91@hotmail.com)

## AD 2. AERODROMES

### WPDL AD 2.1 AERODROME LOCATION INDICATOR AND NAME

WPDL – DILI/PRESIDENTE NICOLAU LOBATO  
International-Domestic

### WPDL AD 2.2 AERODROME GEOGRAPHICAL AND ADMINISTRATIVE DATA

1. ARP coordinates and site at AD	S08° 32' 47.1" E125° 31' 29.4". Rwy center.
2. Direction and distance from Dili city	6.2Km west of Dili city
3. Elevation/reference temperature	25ft/33.8° Celsius
4. Geoid undulation at AD ELEV position	Not available
5 MAG Variation/Annual change	3° E/Not available
6 AD Administration and contact details	Civil Aviation Division Ministry of Transport, Communications and Public Transport, Dili, Timor Leste Tel: +670 390 317 110 Fax: +670 390 371 111 WPDLYDYX Mon-Fri: 2300-0800 excluding public holidays
6. Types of traffic permitted	IFR/VFR
7. Remarks	AD Reference Code 3C

### WPDL AD 2.3 OPERATIONAL HOURS

1. AD administration	Daily 2130-0945
2. Customs and Immigration	Daily 2130-0945
3. Health and sanitation	Yes sanitation. Nil health
4. AIS Briefing Office	Nil
5. ATS reporting office	Nil
6. MET briefing office	Nil
7. ATS	2130-0945
8. Fuelling	Prior arrangement with Air BP and Pertamina
9. Handling	Prior arrangement with Timor Aviation Services, SDV and STAT.
10. Security	H24
11. De-icing	Nil
12. Remarks	Services outside ops hours available on request. PPR for emergency night operations.

### WPDL AD 2.4 HANDLING SERVICES AND FACILITIES

1. Cargo handling facilities	By arrangement with Timor Aviation Services, SDV and STAT.
2. Fuel/Oil Types	JetA1/F34 and Avgas.
3. Fuelling facilities and capacity	Bowsers.
4. De-icing	Nil
5. Hanger service available for visiting acft.	Nil
6. Repair facilities for visiting acft.	Nil
7. Remarks	See AD 1.5

### WPDL AD 2.5 PASSENGER FACILITIES

1. Hotels	Near the AD and in Dili city
2. Restaurants	Cafeteria in terminal bldg. Restaurants in city
3. Transportation	Taxi services available
4. Medical	General Hospital about 8Km in city
5. Bank and Post office	Bank in terminal bldg (AD hours) and in city. Post Office in city
6. Tourist office	In city
7. Remarks	Nil

### WPDL AD 2.6 RESCUE AND FIRE FIGHTING SERVICES

1. AD Category for firefighting	CAT IV Trained personnel: 13 Personnel per shift: 4
2. Rescue Equipment	2 x Ultra Large Foam Tenders, 1 Ambulance and basic aircraft cutting equipment.
3. Capability for removal of disabled aircraft	Nil
4. Remarks	AD Opr. hours

### WPDL AD 2.7 SEASONAL AVAILABILITY

Not applicable
----------------

**WPDL AD 2.8 APRONS, TAXIWAYS AND CHECK LOCATION DATA**

1. Apron Surface and strength	Apron D (Main apron) 215 x 87 m. Surface: Asphalt. PCN: 32/F/B/X/U. Capacity limited. Aprons A, B & C generally for UN aircraft.
2. Width, Surface and strength of taxiway	Single central taxiway 110m x 23m connects runway to Apron D. Surface: Asphalt. PCN: 32/F/B/X/U. Aprons A, B & C connected to runway via connecting taxiways.
3. Altimeter location and elevation check point	Nil
4. VOR/DME Check point	Holding Position taxiway D.
5. INS Check point	Nil
6. Remarks	PPR from AD Ops for engine tests at aprons.

**WPDL AD 2.9 SURFACE MOVEMENT GUIDANCE, CONTROL SYSTEMS AND MARKINGS**

1. Aircraft stand ID signs and visual docking & parking guidance system of aircraft stands	Nil stands and guidance systems
2. RWY and TWY markings and LGT	RWY: Designation, THR, TDZ, Aiming Point, centerline, runway edge and end marked. Runway edge and end lighted. TWY: Centre line marked. Taxiway Delta holding position marked and lighted.
3. Stop bars	Nil
4. Remarks	Nil

**WPDL AD 2.10 AERODROME OBSTACLES**

1. Terrain	High terrain to south encroaches into both approaches. Nil hazard or obstruction lights.
2. ICAO Annex 14 Surfaces	Transition, Inner Horizontal and Conical surfaces infringed by vegetation and terrain. Nil obstruction lighting installed.

**WPDL AD 2.11 METEOROLOGICAL INFORMATION PROVIDED**

1. Associated MET office	Nil
2. Hours of service	Nil
3. Office responsible for TAF preparation	ARFOR/TAF available from Darwin MET services.
4. Trend forecast	Nil
5. Briefing provided	Nil
6. Flight Documentation/Language	Nil
7. Charts, etc. for briefing	Nil
8. Supplementary equipment available for briefing	Nil
9. ATS units provided with information	Nil. Comoro ATC obtains AD QNH, wind, temp and cloud information from MET sensors
10. Additional information	Nil

**WPDL AD 2.12 RUNWAY PHYSICAL CHARACTERISTICS**

<b>WPDL AD 2.12 Runway Physical Characteristics</b>			
1. Designation	08/26	7. Slope	0.1%
2. Bearing	073°/253° Mag.	8. Stopway	Nil
3. Dimension	1850m x 30m	9. Clearway	Nil
4. PCN	32/F/B/X/U. Asphalt	10. Flight Strip	1970m x 150m
5. THR Coords	THR 08: S08°32' 53.7" E125°31' 01.1" THR 26: S08° 32' 40.5" E125° 31' 57.7"	11. Obs. Zone	Nil
6. THR elev.	THR 08/26: 17/25ft		
12. Remarks	Aircraft with MTOW greater than 7,000Kg must roll to runway end after landing and backtrack to prevent damage to runway surface.		

**WPDL AD 2.13 DECLARED DISTANCES**

	<b>TORA</b>	<b>TODA</b>	<b>ASDA</b>	<b>LDA</b>
1. Rwy 08	1850	1850	1850	1790 (*1)
2. Rwy 26	1790 (*2)	1850	1850	1790 (*2)
3. Remarks	(*1) Rwy 08 THR displaced 60m permanently. (*2) Declared Distance reduced due to no RESA at Rwy 08.			

**WPDL AD 2.14 APPROACH AND RUNWAY LIGHTING**

1. Runway designator	08/26
2. Approach lights	Nil
3. THR lights	Green. Rwy 08 THR lights displaced 60m.
4. VASI	PAPI 3° Glide slope.
5. TDZ lighting	Nil
6. Rwy centerline lights	Nil
7. Rwy Edge lights	White, low intensity, omni-directional, variable brilliance.
8. Rwy end light & Wing bars	Red Rwy end lights. Nil wing bars
9. Stopway lights	Nil stopway
10. Remarks	Pilot Activated Lighting (PAL) control of AGL for emergency only night ops available. Pilot to activate lights 10 mins before landing/take-off by transmitting on frequency 125.5MHz. Lights will remain on for 45 mins. Two red lights mounted on control tower roof will flash to indicate remaining 10 mins.

**WPDL AD 2.15 OTHER LIGHTING AND SECONDARY POWER SUPPLY**

1. ABN/IBN location, characteristics and hours of operation	ABN located on control tower roof. Flashing Green/White. Nil ident. ATC hours.
2. LDI location Anemometer location	Located left of THR Rwy 08. Unlit 50m NW of control tower. Unlit.
3. Taxiway edge and centerline lights	Yes, taxiway Delta. Nil centerline lights.
4. Taxiway holding position light	Yes, taxiway Delta
5. Apron	Flood lights in Apron D.
6. Secondary power supply/switch-over time	Available for all lighting to AD. Switchover time within 60 seconds. ATS/Navaid systems supported by UPS.

**WPDL AD 2.16 HELICOPTER LANDING AREA**

Nil. Four landing pads are located south of Runway 08 THR. See AD 2.20.
---

**WPDL AD 2.17 AIR TRAFFIC SERVICES AIRSPACE**

1. Designation and lateral limits	Dili CTR. Arc radius 25NM centred on DIL VOR/DME from 265R through north to the 080R joining arc radius 15NM DIL VOR/DME from 081R through south to the 264R.
2. Vertical limits	Surface level to 11,000ft amsl.
3. Airspace classification	Class C
4. ATS unit callsign and language	Comoro Approach/Comoro Ground. English
5. Transition altitude	11,000ft
6. Remarks	Nil

**WPDL AD 2.18 ATS COMMUNICATIONS FACILITIES**

1. Service designation	Combined Aerodrome/Approach control. Surface Movement Control.
2. Callsigns	"Comoro Approach" and "Comoro Ground"
3. Frequencies	122.9MHz (AD/APP), 133.9MHz (SMC)
4. Hours of operation	Daily 2130-0945
5. Remarks	High terrain restricts two-way VHF communications between ATC and aircraft operating at low levels in the Dili CTR southern sector. Pilots operating within or approaching the CTR from the southern sector should transmit blind their position, altitude and intention if unable to establish two-way communications to avoid traffic conflict.

**WPDL AD 2.19 RADIO NAVIGATIONAL AND LANDING AIDS**

1. Type	NDB*	DVOR/DME**
2. Identification	"KO".	"DIL"
3. Frequencies	391KHz.	113.4MHz/Ch 81X
4. Hours of operation	H24	H24
5. Coordinates	S08 33.1 E125 31.2	S08 32.6 E125 31.7
6. Remarks	<p>*NDB: Severe needle fluctuations may occur within minor arc bearing 120° to 230° below FL150, along bearings over islands to the north especially bearing 297° between 25NM and 35NM. Excessive needle fluctuations may be experienced along bearing 084° from overhead NDB to "BC" NDB and along bearing 257° from overhead to waypoint 'OTORA'. Holding pattern not to be used.</p> <p>**DVOR/DME: Limited coverage over terrain in southern sector.</p>	

**WPDL AD 2.20 LOCAL TRAFFIC REGULATIONS**

1. AD Circuit	Left hand circuit for 08. Right hand circuit for Rwy 26.
2. Helicopters	Helicopters must use runway for take-off and landing and shall ground taxi to/from aprons.
3. Parking in Apron D	Nil stands. Pilots must follow "Follow Me" vehicle & marshaller for parking and use minimum thrust taxiing in/out of Apron D.

**WPDL AD 2.21 NOISE ABATEMENT PROCEDURES**

Nil

**WPDL AD 2.22 FLIGHT PROCEDURES**

1. Flight Plans	All flights operating within Dili CTR require flight plans unless exempted by ATC.
2. Radio Communications Failure	See GEN 3.4.5.
3. Helicopters	Helicopters shall route via Helicopter Reporting Points.

**WPDL AD 2.23 ADDITIONAL INFORMATION**

Nil.



---

**WPDL AD 2.24 RELATED CHARTS**

1. Aerodrome Chart-ICAO	Page WPDL AD 2-7
2. Aerodrome Obstacle Chart – ICAO Type A	Page WPDL AD 2-8
3. Area Chart-ICAO- Dili CTR	Page WPDL AD 2-9
4. Instrument Approach Chart- ICAO NDB Rwy 08/26	Page WPDL AD 2-10
5. Instrument Approach Chart- ICAO VOR Rwy 08/26	Page WPDL AD 2-11
6. Instrument Approach Chart- ICAO VOR/DME Rwy 08/26	Page WPDL AD 2-12

AERODROME CHART - ICAO 08°32'47.1"S ELEV 25FT  
125°31'29.4"E

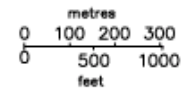
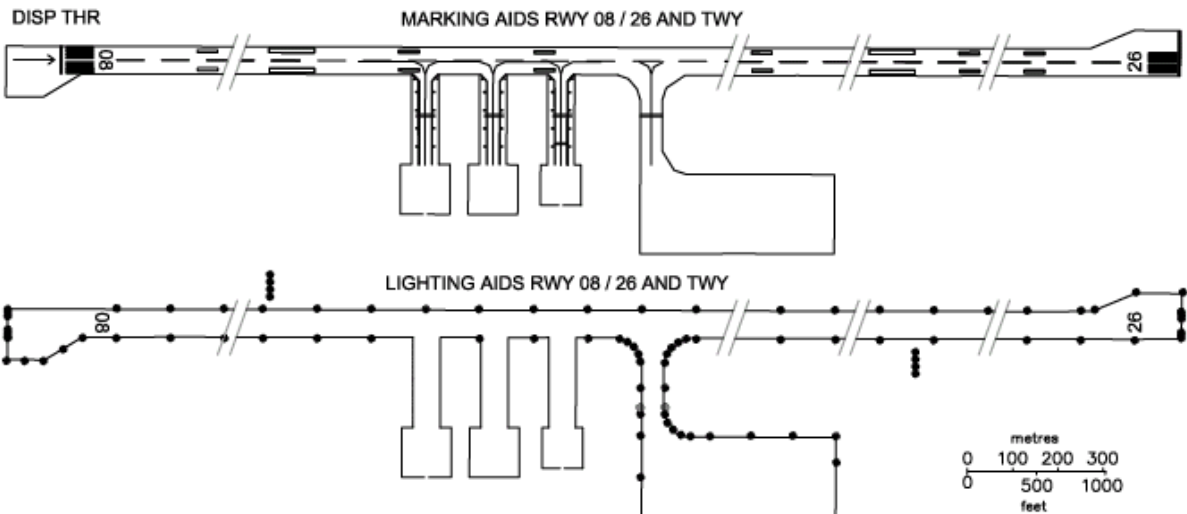
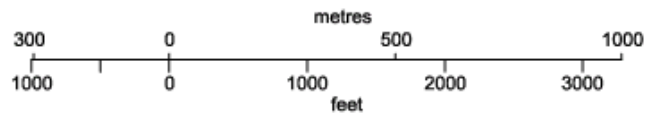
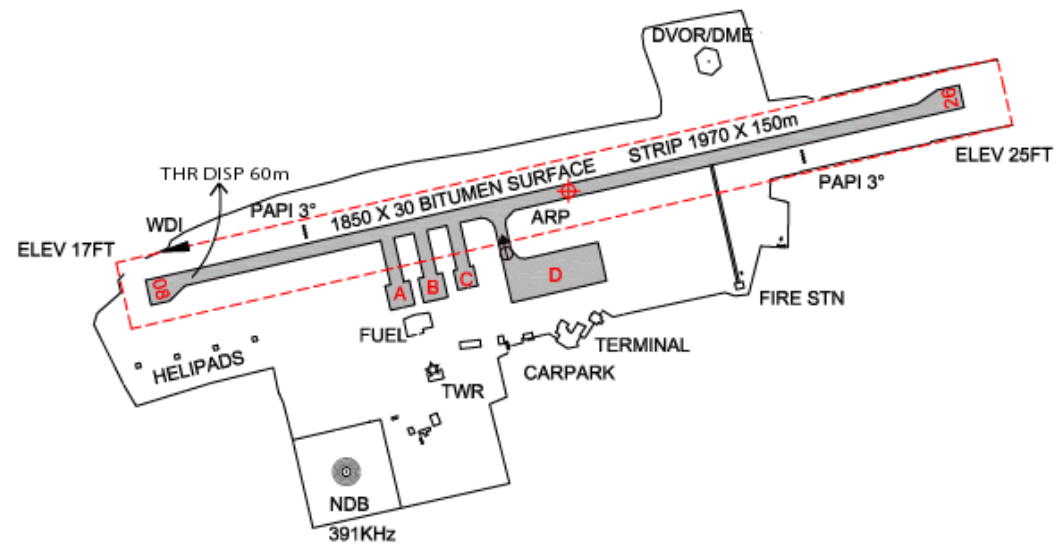
SMC	133.9
APP/Twr	122.9

DILI  
PRES. NICOLAU LOBATO

RWY	DIRECTION	THR	BEARING STRENGTH
08	73°	08°32'53.7"S 125°31'01.1"E	PCN 32/F/B/X/U RWY, TAXIWAY AND APRON D.
26	253°	08°32'40.5"S 125°31'57.7"E	

LEGEND	
VOR/DME CHECK POINT AND FREQUENCY	DIL 113.4 Ch81X

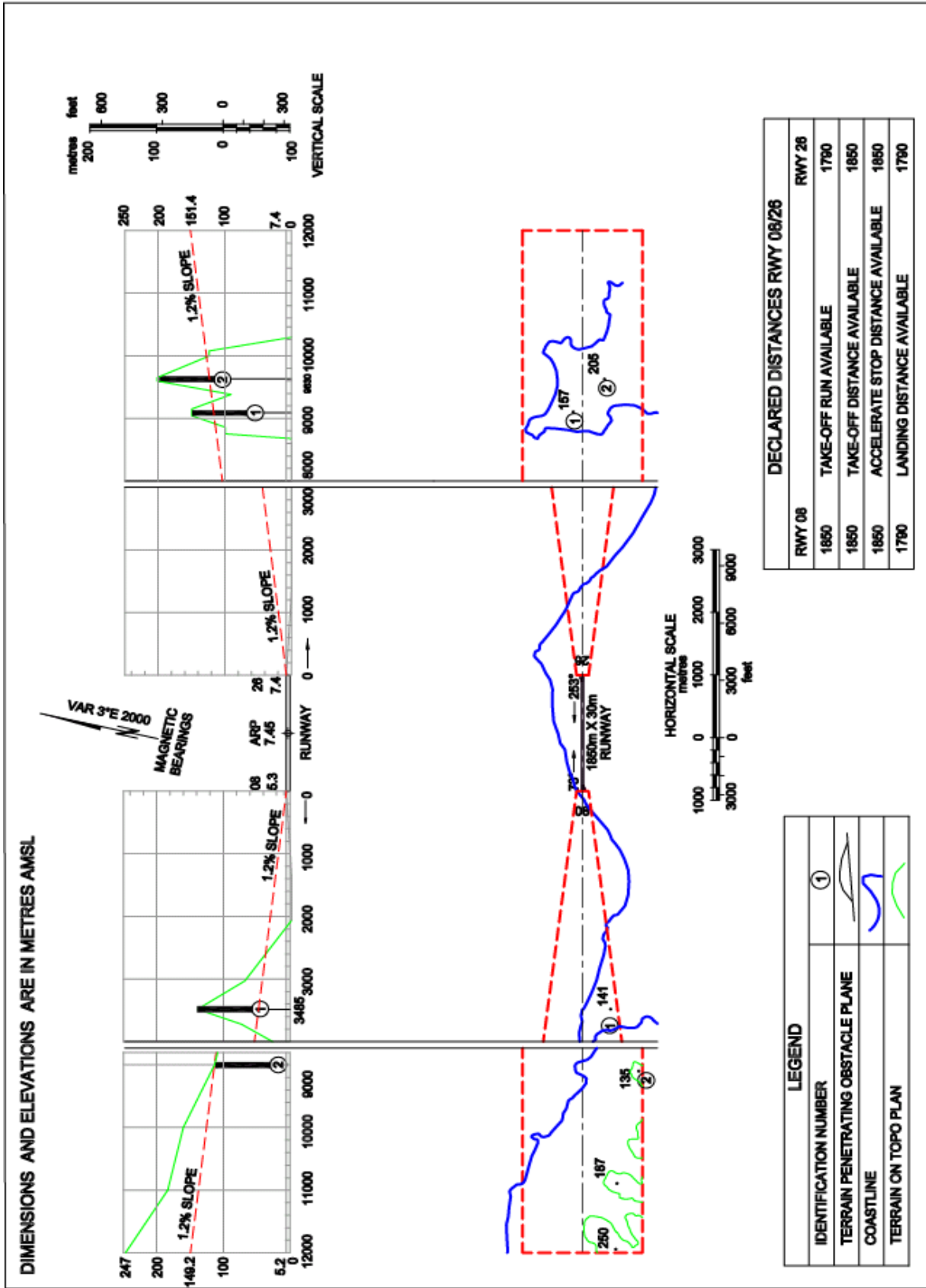
VAR 3° E (2002)  
BEARINGS ARE MAGNETIC  
ELEVATIONS ARE IN FEET  
HEIGHTS ARE ABOVE MSL



WPDL/AD/01

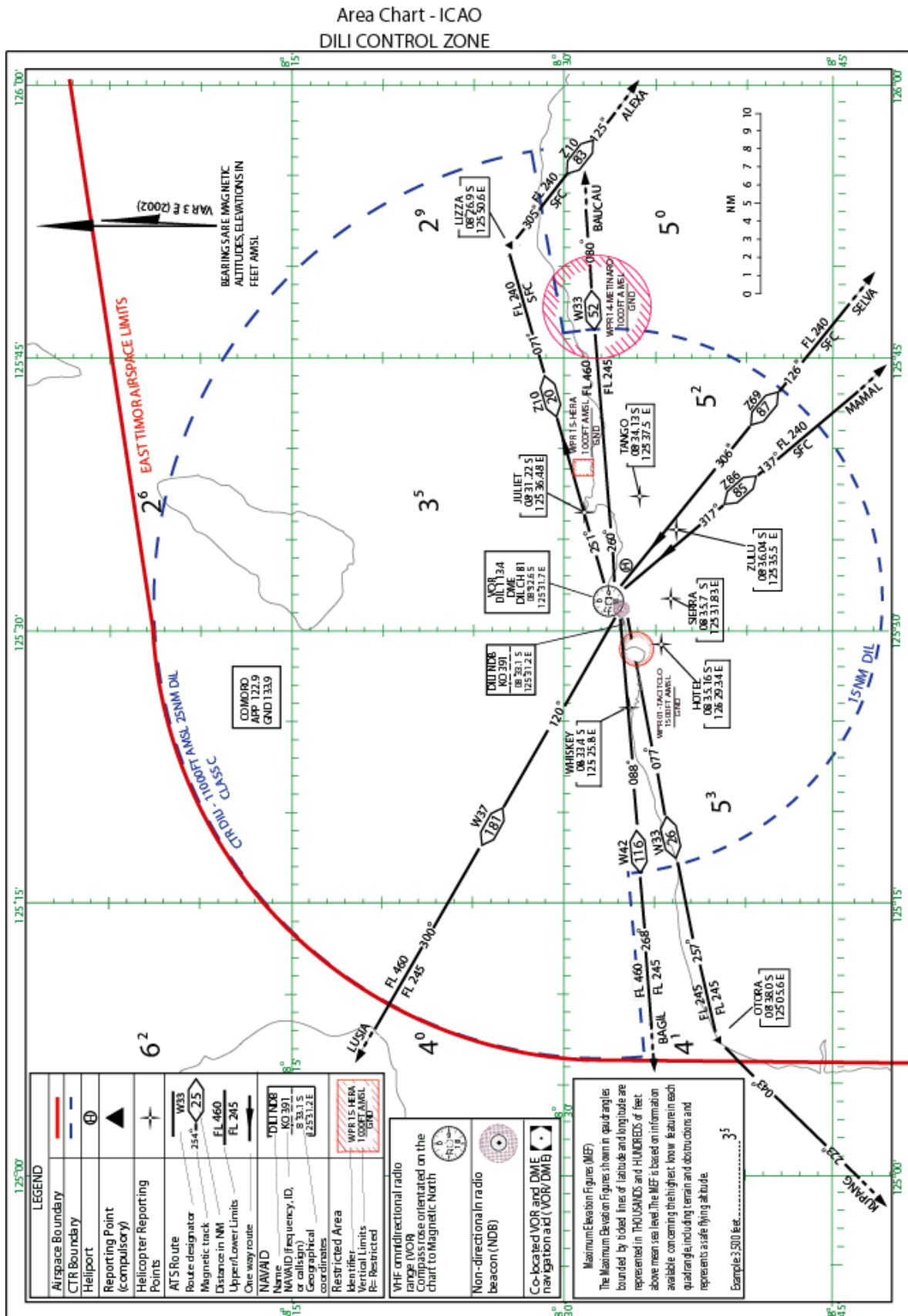
**AERODROME OBSTACLE CHART -ICAO**  
TYPE A (OPERATING LIMITATIONS)

**DILI**  
**PRES. NICOLAU LOBATO**

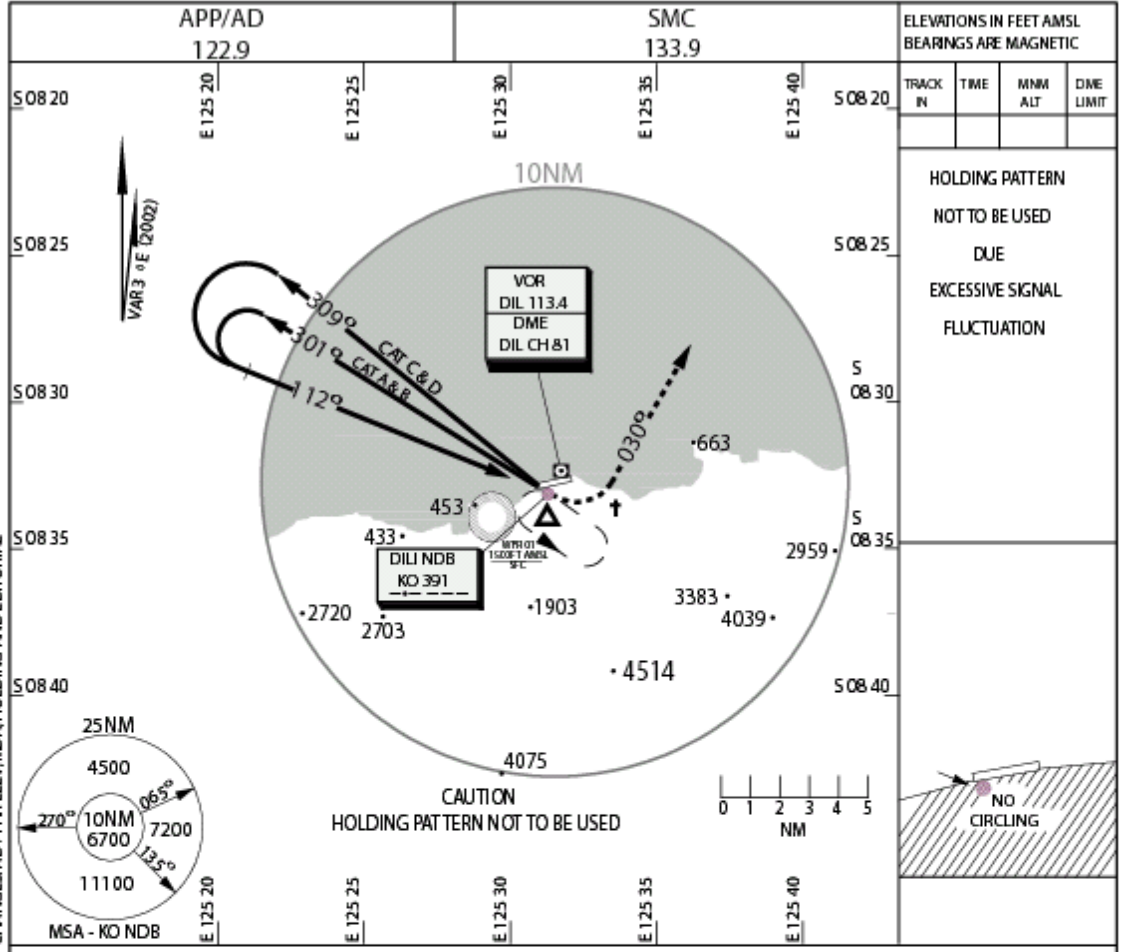


10 FEB 2004

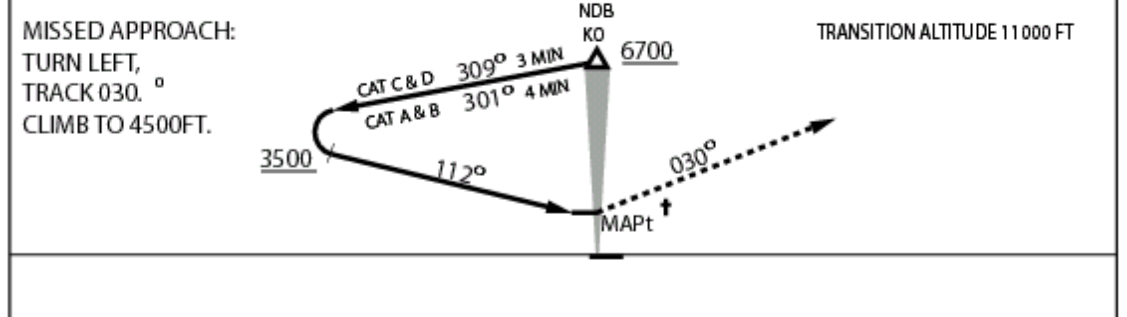
DILI/AD/1-2004



INSTRUMENT APPROACH CHART - ICAO AERODROME ELEV 25 FT DILI/PRESIDENTE NICOLAU LOBATO (WPDL) **NDB**



CHANGES: AD / THR ELEV, MDA, HOLDING, AND EDITORIAL

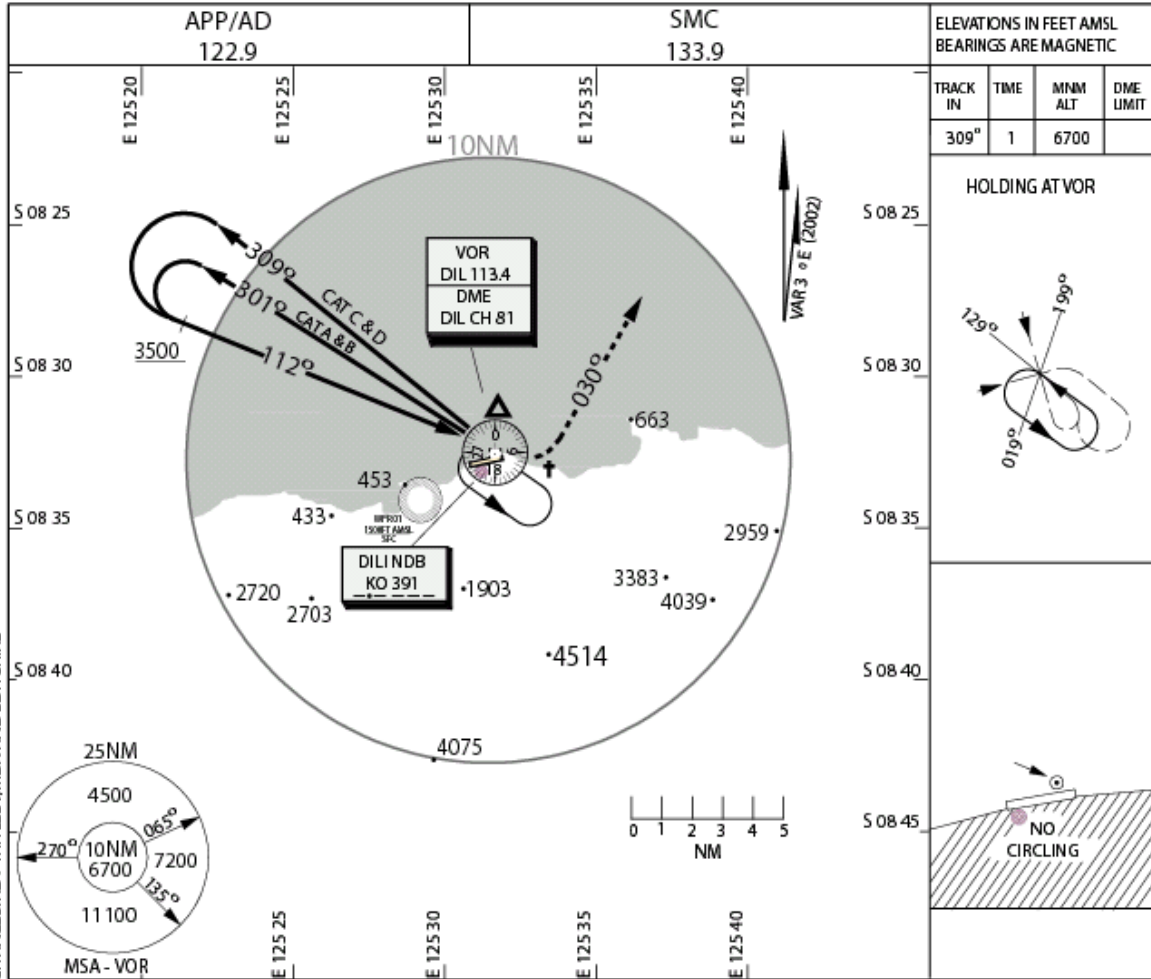


CATEGORY	A	B	C	D
CIRCLING*	1300 1275 -2400		1400 1375 -4000	1560 1535 -5000

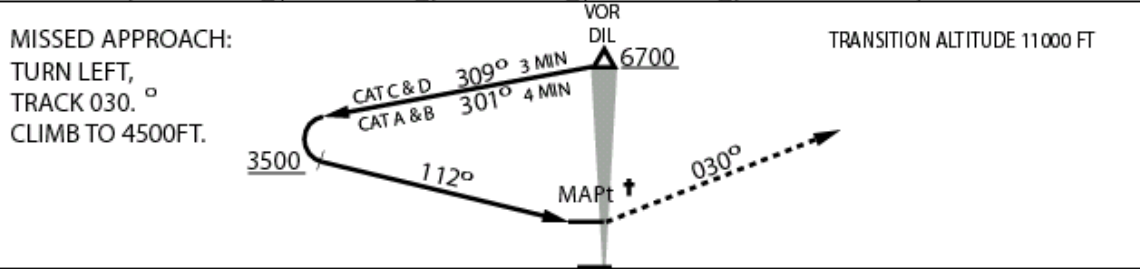
NOTES: WPDL/NDB/01

- \*1. NO CIRCLING SOUTH OF RWY 08/26
2. MAX IAS: INITIAL: 210KT; MAPt † TURN: CAT C: 160KT CAT D: 185KT
- †3. MNM ANGLE OF BANK MAPt TURN 20°

INSTRUMENT APPROACH CHART - ICAO AERODROME ELEV 25 FT DILI/PRESIDENTE NICOLAU LOBATO (WPDL) **VOR**



CHANGES: AD / THR ELEV: MDA AND EDITORIAL



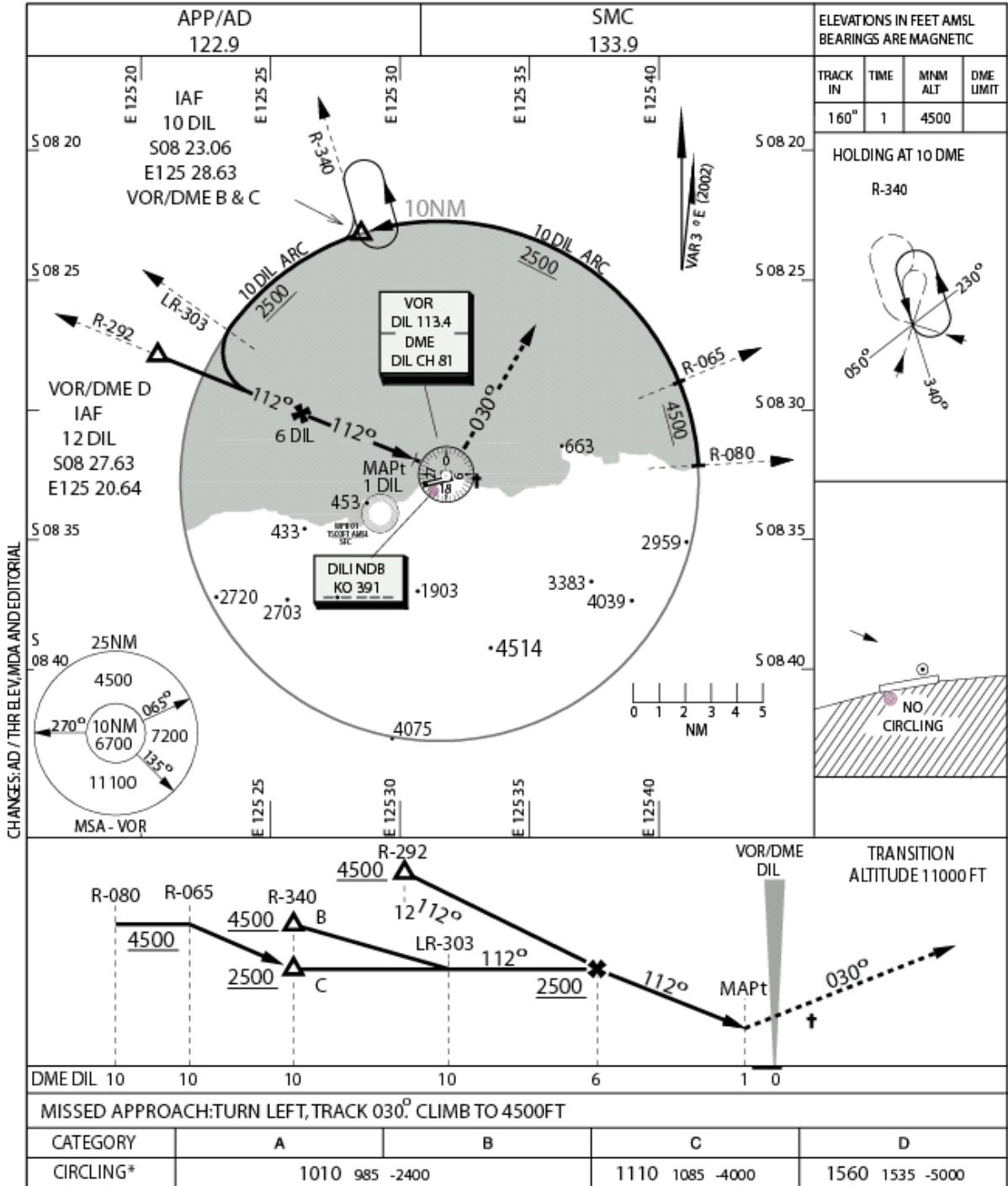
CATEGORY	A	B	C	D
CIRCLING*	1010 985 -2400		1110 1085 -4000	1560 1535 -5000

NOTES:

- \* 1. NO CIRCLING SOUTH OF RWY 08/26
- 2. MAX IAS:- HOLDING, INITIAL & † MAPt TURN: 210KT

WPDL/VOR/01

INSTRUMENT APPROACH CHART - ICAO AERODROME ELEV 25 FT DILI/PRESIDENTE NICOLAU LOBATO (WPDL) VOR/DME B, C & D



CHANGES: AD / THR ELEV, MDA AND EDITORIAL

NOTES:

- \* 1. NO CIRCLING SOUTH OF RWY 08/26
- 2. MAX IAS:- HOLDING: 230KT
- † MAPt TURN: 210KT

WPDL/VOR-DME/01

**WPEC AD 2.1 AERODROME LOCATION INDICATOR AND NAME**

**WPEC – BAUCAU/Cakung Airport  
International/ Domestic – Unattended. PPR.**

**WPEC AD 2.2 AERODROME GEOGRAPHICAL AND ADMINISTRATIVE DATA**

1.ARP Coordinates and site at AD	S08 29'.07.7" E126 23' 57.6" Runway center
2.Direction and Distance from City	6.5Km west of Baucau town
3.Elevation reference temperature	1777ft/Not available
4.Geoid undulation at AD ELEV position	Not available
5.MAG Variation/Annual change	3 degree East/ Not available
6. AD administration and contact details	CAD Dili Tel.No. +670 3317 110 Fax No. +670 3317111
7 Type of traffic permitted	VFR
8 Remarks	AD is unmanned and no services are available. PPR from CAD

**WPEC AD 2.3 OPERATIONAL HOURS**

AD administration	Nil
Remarks	AD available sunrise to sunset. Aircraft intending to operate into Baucau must contact CAD at +670 3317110 ext 101 or 102. Fax +670 3317111

**WPEC AD 2.8 APRONS , TAXIWAYS AND CHECK LOCATION DATA**

Apron Surface and strength	Width : 100mx108m. Surface : Asphalt PCN : 49F/A/W/T
Width Surface and strength of taxiway	37m, asphalt, PCN: 49F/A/W/T
Remarks	Nil

**WPEC AD 2.9 SURFACE MOVEMENT GUIDANCE, CONTROL SYSTEMS AND MARKING**

RWY and TWY Markings	RWY: Designation, THR, Aiming point, center line, runway edge and end marked. TWY: Center line & holding position marked.
----------------------	--

**WPEC AD 2.10 AERODROME OBSTACLE**

Nil
-----



**WPEC 2.12 RUNWAY PHYSICAL CHARACTERISTIC**

1. Designation	14/32	7. Slope	1%
2. Bearing	139/319 Mag.	8. Stopway	Nil
3. Dimension	2509m x56m	9. Clearway	Nil
4. PCN	49 F/A/W/T	10. Flight Strip	2629m x 300m
5. THR Coords.	THR 14: S08 28' 35.31" E126 23'32.36" THR32: S08 29'39.85" E126 24'22.64"	11. Obs. Zone	Nil
THR Elev	THR14/32: 1692/1777	12. Remarks	Nil

**WPEC AD.13 DECLARED DISTANCES**

	<b>TORA</b>	<b>ASDA</b>	<b>TODA</b>	<b>LDA</b>
<b>RWY 14</b>	<b>2509</b>	<b>2509</b>	<b>2509</b>	<b>2509</b>
<b>RWY 32</b>	<b>2509</b>	<b>2509</b>	<b>2509</b>	<b>2509</b>

**WPDB AD 2.17 AIR TRAFFIC SERVICES AIRSPACE**

1. Designation and lateral limits	Baucau ATZ Circle radius 3NM centered on ARP
2. Vertical limits	Surface level to A040
3. Airspace classification	G
4. ATS unit callsign and language	Nil
5. Transition altitude	11,000ft
6. Remarks	Pilots operating within or transiting ATZ to broadcast position and intention on 127.1MHZ

**WPDB AD 2.22 FLIGHT PROCEDURS**

1. Pilots must fly over AD to observe before making an approach to land
---

**WPDB AD 2.23 ADDITIONAL INFORMATION**

1. WDI	Available 14/32
--------	-----------------

**WPEC AD 2.24 RELATED CHART**

<b>Aerodrome Chart - ICAO</b>	<b>Page WPEC AD 3-3</b>
-------------------------------	-------------------------

AERODROME CHART - ICAO 08°29'07.7" S 126°23'57.6" E ELEV 1777 ft BAUCAU/BAUCAU WPEC

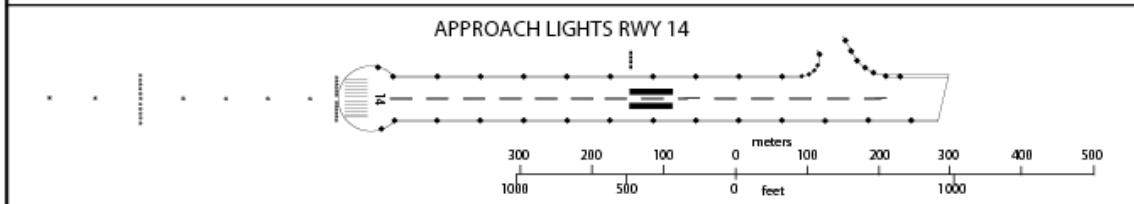
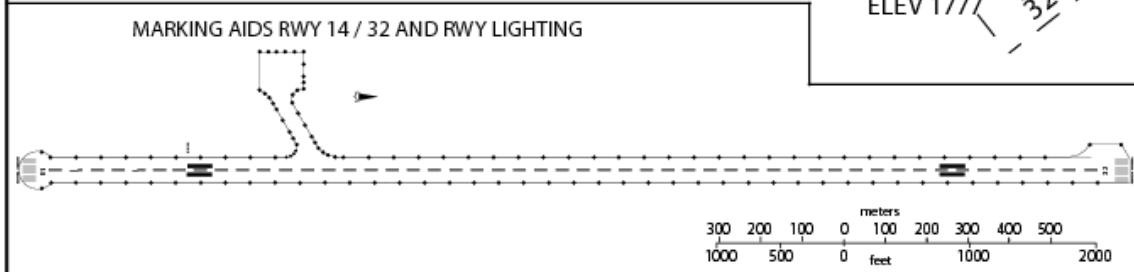
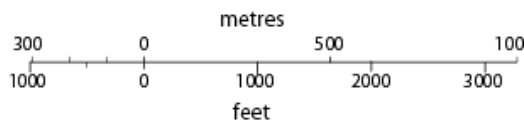
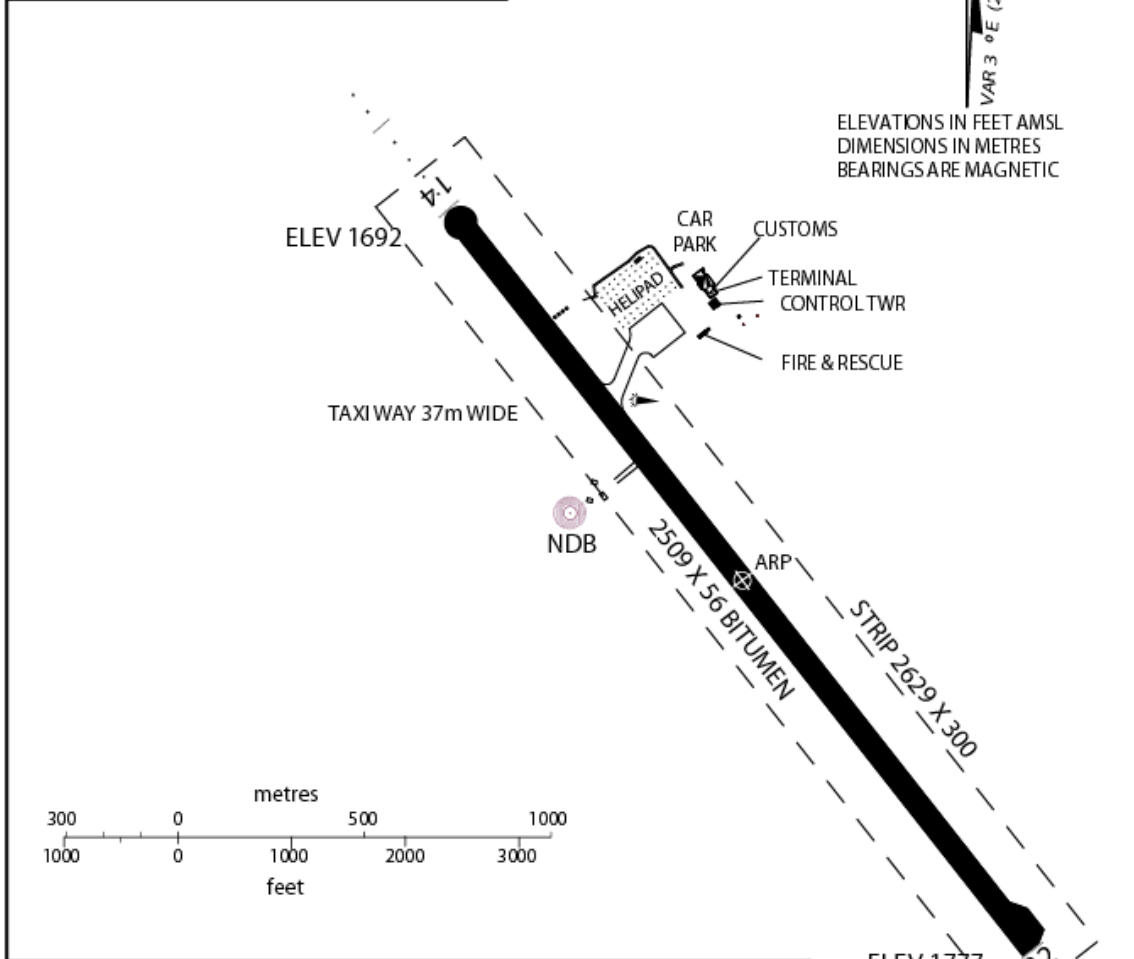
RWY	DIRECTION	THR	BEARING STRENGTH
14	139°	08°28'35.31"S 126°23'32.36"E	PCN 49/F/A/W/T runway, taxiway and apron
32	319°	08°29'39.85"S 126°24'22.64"E	

Pilots to broadcast on  
Timor Common Low  
127.1MHz when opr  
within Baucau ATZ.



ELEVATIONS IN FEET AMSL  
DIMENSIONS IN METRES  
BEARINGS ARE MAGNETIC

CHANGES: DECLARED DIST, RWY MARKINGS, THR COORDS, THR/AD ELEV & PAI RWY 14



WPEC/AD/01

**WPDB AD 2.1 AERODROME LOCATION INDICATOR AND NAME**

WPDB – SUAI  
Domestic – Unattended. PPR.

**WPDB AD 2.2 AERODROME GEOGRAPHICAL AND ADMINISTRATIVE DATA**

1. ARP coordinates and site at AD	S091814.3 E1251712.7. Rwy centre.
2. Direction and distance from city	4Km east of Suai town
3. Elevation/Reference temperature	96 feet/Not available
4. Geoid undulation at AD ELEV position	Not available
5. MAG Variation/Annual change	3° E/Not available
6. AD Administration and contact details	CAD Dili. Tel No. +670 3317 110. Fax. No +670 3317 111
7. Types of traffic permitted	VFR
8. Remarks	AD is unmanned and no services are available. PPR from CAD.

**WPDB AD 2.3 OPERATIONAL HOURS**

1. AD administration	Nil
2. Remarks	AD available sunrise to sunset. Pilots to exercise caution landing and talking off due people and animals crossing runway.

**WPDB AD 2.8 APRONS, TAXIWAYS AND CHECK LOCATION DATA**

1. Apron Surface and strength	Surface: 40 x 40m. PCN: Not known
2. Width, Surface and strength of taxiway	Nil taxiway

**WPDB AD 2.9 SURFACE MOVEMENT AND GUIDANCE CONTROL SYSTEMS**

1. RWY and TWY markings	RWY: Designation, THR, TDZ, center line, runway edge and end marked. TWY: Nil
-------------------------	--

**WMPB AD 2.10 AERODROME OBSTACLES**

1. Kite flying near AD	Seasonal
2. Telecommunications mast 130ft AGL. Unlit	Position: S09 15.0 E125 00.2

**WMPB AD 2.12 RUNWAY PHYSICAL CHARACTERISTICS**

1. Designation	16/34	7. Slope	1.6%
2. Bearing	164°/344° Mag.	8. Stopway	Nil
3. Dimension	1050m x 30m	9. Clearway	60m
4. Surface/PCN	Asphalt/Not known	10. Flight Strip	1170m x 100m
5. THR coords.	THR16: S091800.28 E1251709.57 THR34: S091828.46 E1251715.94	11. Obs. Zone	Nil
6. THR elev.	THR16/34: 96ft/53ft	12. Remarks	Rwy 16 THR displaced by 150m. Displaced surface covered with PSP.

**WPDB AD 2.13 DECLARED DISTANCES**

	<b>TORA</b>	<b>TODA</b>	<b>ASDA</b>	<b>LDA</b>
1. Rwy 16	1050	1110	1050	900
2. Rwy 34	1050	1110	1050	1050

**WPDB AD 2.17 AIR TRAFFIC SERVICES AIRSPACE**

1. Designation and lateral limits	Suai ATZ. Circle radius 3NM centred on ARP
2. Vertical limits	Surface level to A020
3. Airspace classification	G
4. ATS unit callsign and language	Nil
5. Transition altitude	11,000ft
6. Remarks	Pilots operating within or transiting ATZ to broadcast position and intention on 127.1MHz

**WPDB AD 2.22 FLIGHT PROCEDURES**

1. Pilots must fly over AD to observe before making an approach to land.
--

**WPDB AD 2.23 ADDITIONAL INFORMATION**

1. WDI	Available Rwy 16/34
--------	---------------------

**WPDB AD 2.24 RELATED CHART**

1. Aerodrome Chart-ICAO	Page WPDB AD 4-3
-------------------------	------------------

AERODROME CHART - ICAO **09°18'14.3" S** **125°17'12.7" E** **ELEV 96 ft** **SUAI/SUAI**  
**WPDB**

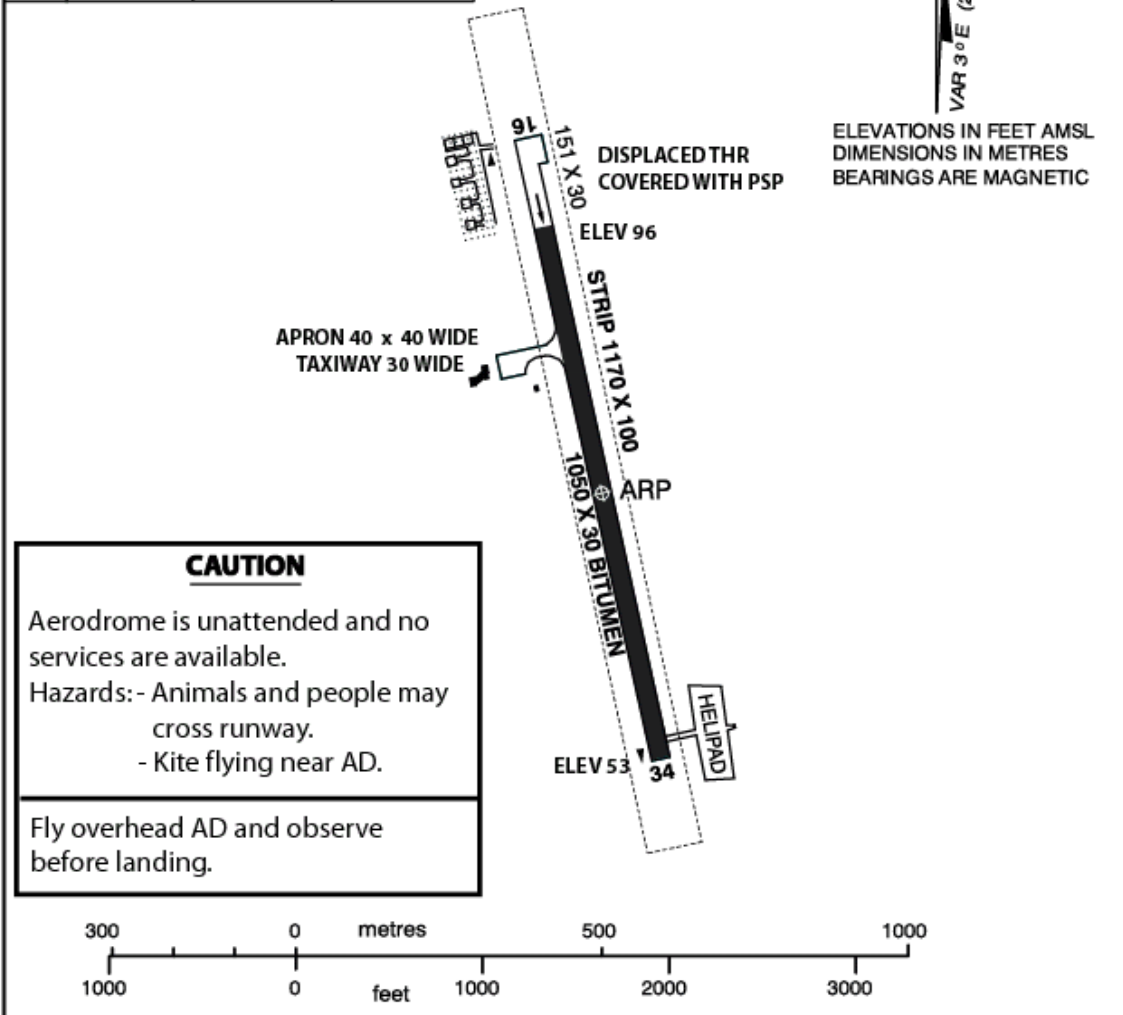
RWY	DIRECTION	THR	BEARING STRENGTH
16	164°	09°18'00.2"S 125°17'09.5"E	NOT DETERMINED
34	344°	09°18'28.4"S 125°17'15.9"E	

Pilots to broadcast on  
Timor Common Low  
127.1MHz when flying  
within Suai ATZ.



ELEVATIONS IN FEET AMSL  
DIMENSIONS IN METRES  
BEARINGS ARE MAGNETIC

CHANGES: AD STATUS CHANGE - UNATTENDED

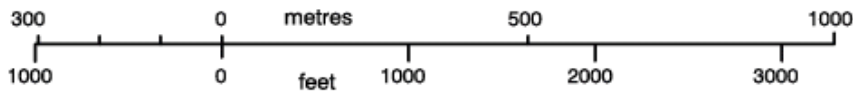


**CAUTION**

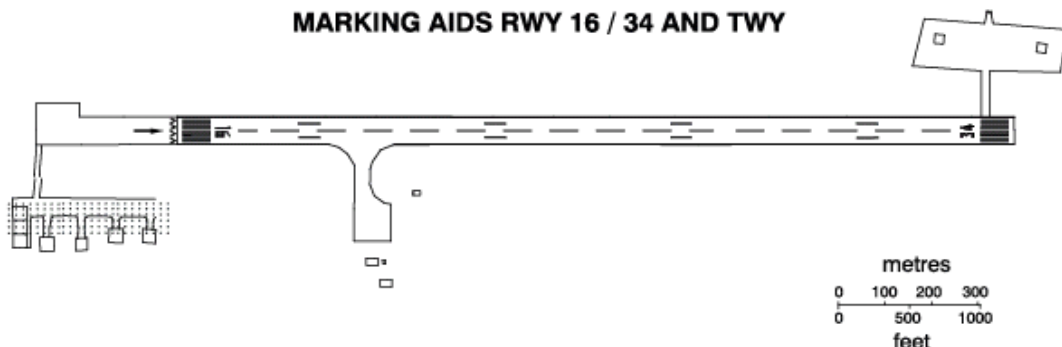
Aerodrome is unattended and no services are available.  
Hazards: - Animals and people may cross runway.  
- Kite flying near AD.

---

Fly overhead AD and observe before landing.



**MARKING AIDS RWY 16 / 34 AND TWY**



WPDB/AD/02